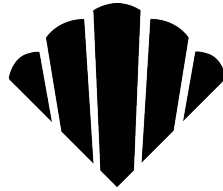


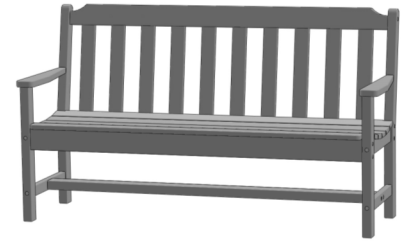
# Newport Bench

037 4' Bench

137 5' Bench



SEASIDE CASUAL



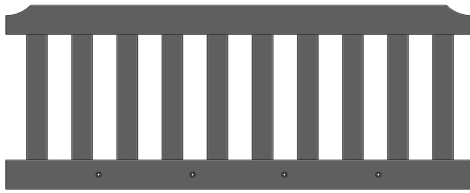
## ASSEMBLY INSTRUCTIONS

**1**

**PLEASE READ INSTRUCTIONS COMPLETELY BEFORE BEGINNING.**  
Carefully remove contents from box. Make sure that all parts and hardware are included using the Parts List below.

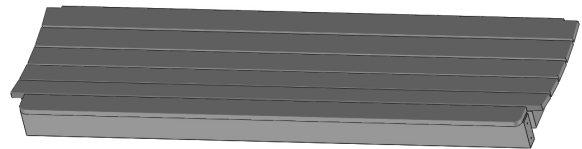
**Tools Required:** 4mm Allen Wrench (included); #2 Phillips Head Screwdriver; Rubber Mallet.

**Back Assembly**



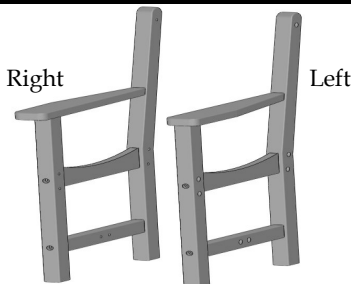
x 1

**Seat Assembly**



x 1

**Right & Left Side Assemblies**



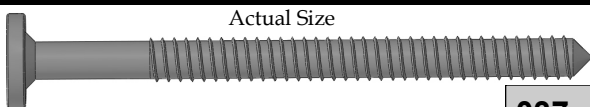
x 1ea

**Lower Stretcher (137 Only)**



x 1

**80mm Hex Lag**



Part Code: 316-1/4-10-80HL

037 x 13

137 x 18

**4mm Allen Wrench**

Actual Size



Part Code: 4MMALLEN

x 1

**Bungs**

Actual Size



037 x 10

137 x 18

**3/4" Phillips Pan Head Screw (137 Only)**

Actual Size



Part Code: 316-8x3/4PPS

x 9

**1-1/4" Phillips Head Screw**

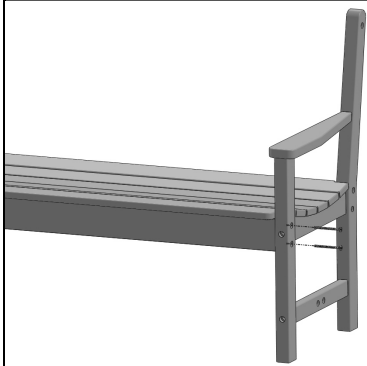
Actual Size



Part Code: 316-8X1-1/4PFDS

x 4

WARRANTY QUESTIONS OR COMMENTS PLEASE CALL TOLL FREE AT 1-800-809-3114

**2****ATTACH SIDE ASSEMBLIES TO SEAT ASSEMBLY**

Align Left Side Assembly with seat assembly. Secure using (2) 80MM Hex Lags through the counter-bored

holes in front leg into pilot holes in front apron of seat assembly. Plug holes with (2) 5/8" taps®.

**Repeat process for Right Side.**

**3****ATTACH BACK TO REAR LEGS**

Align counter-bored holes in Rear Left Leg with Pilot holes in Back Assembly, ensuring that the

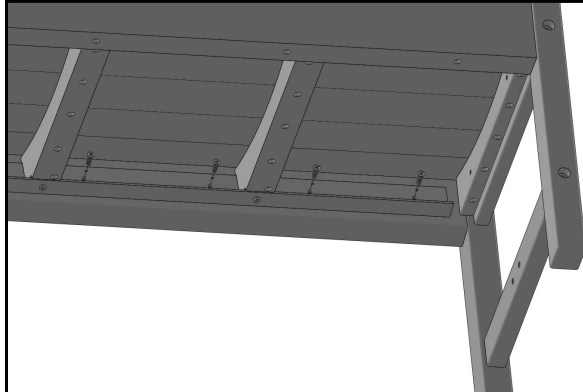
counter-bores in lower back are facing outward. Attach using (3) 80mm Hex Lags. Plug holes with (3) 5/8" taps®.

**Repeat process for Right side.**

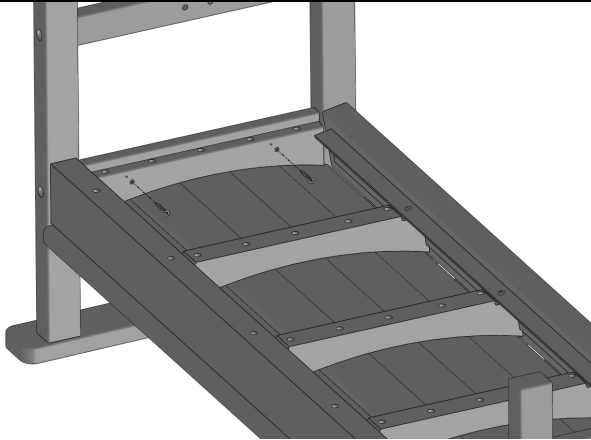
**4****ATTACH BACK ASSEMBLY TO SEAT**

Secure Lower Back Assembly to Seat Assembly using (4) 80MM Hex Lags (3 for 037) thru counter-bored holes in lower back into pilot holes in seat supports. Plug holes with (4)

5/8" taps® .

**5****SECURE REAR SEAT CLEAT TO LOWER BACK (137 ONLY)**

Turn Assembly upside down. Secure aluminum seat cleat to lower back using (9) 3/4" Phillips Pan Head Screws.

**6****ATTACH SEAT CLEAT TO SIDE ASSEMBLY**

Secure outer seat cleat to side assembly using (2) 1-1/4" Phillips Head Screws.

**Repeat Process for other side.**

**7****ATTACH STRETCHER TO SIDE ASSEMBLIES (137 ONLY)**

Align counter-bored holes in lower side stretcher with Pilot holes in long stretcher, making sure that the aluminum in the long stretcher is facing down. Attach using (2) 80mm Hex Lags. Plug holes with (2) 5/8" Bungs using rubber mallet.

**Repeat process for other side.**