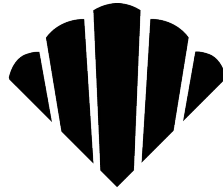
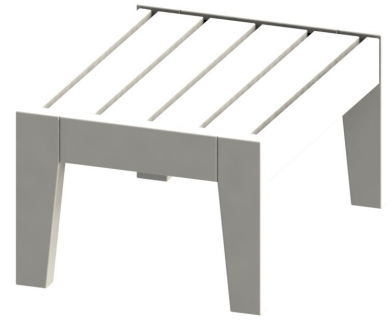


**DEX Ottoman**  
(146)



SEASIDE CASUAL



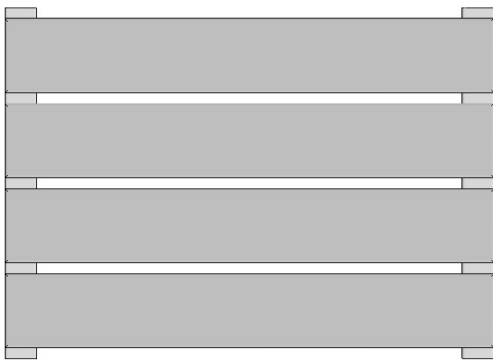
**ASSEMBLY INSTRUCTIONS**

**1**

**PLEASE READ INSTRUCTIONS COMPLETELY BEFORE BEGINNING.**  
Carefully remove contents from box. Make sure that all parts and hardware are included using the Parts List below.

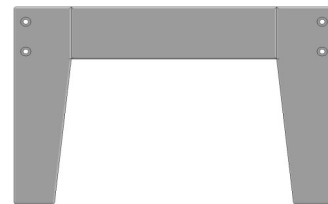
**Tools Required:** 4mm Allen Wrench (included); #2 Phillips Head Screwdriver;

**Foot Rest**



x 1

**Leg Assembly**



x 2

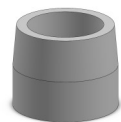
**Apron**



x 2

**5/8" tap®**

Actual Size



x 8

**4mm Allen Wrench**

Actual Size

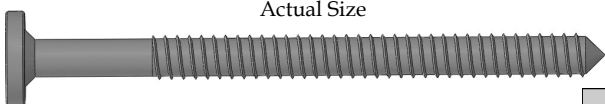


Part Code: 4MMALLEN

x 1

**80mm Hex Lag**

Actual Size



Part Code: 316-1/4-10-80HL

x 8

**1-3/4" Phillips Head Screw**

Actual Size



Part Code: 316-8X1-3/4PFDS

x 8

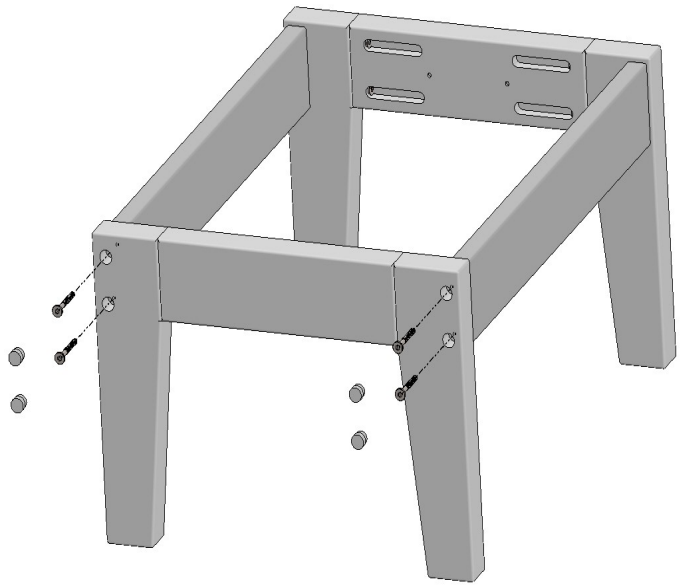
WARRANTY QUESTIONS OR COMMENTS PLEASE CALL TOLL FREE AT 1-800-809-3114

## 2

### ATTACH LEGS TO APRONS

Attach Leg Assembly to Aprons using (4) 80 mm Hex Lags thru counter-bored holes in Leg Assembly into pilot holes in aprons. Plug Holes using 5/8" taps®.

Repeat process for other side.



## 3

### SECURE FOOT REST TO LEGS

Secure Foot Rest Assembly to Legs using (4) 1-3/4" Phillips Head Screws through counter-sunk holes in cleats into pilot holes in Leg Assembly.

Repeat process for other side.

