

HIP CLUB CHAIR

407



SEASIDE CASUAL



ASSEMBLY INSTRUCTIONS

1

PLEASE READ INSTRUCTIONS COMPLETELY BEFORE BEGINNING.
Carefully remove contents from box. Make sure that all parts and hardware are included using the Parts List below.

Tools Required: #2 Phillips Head Screwdriver; 4mm Allen Key(included)

CHAIR FRAME (407F)



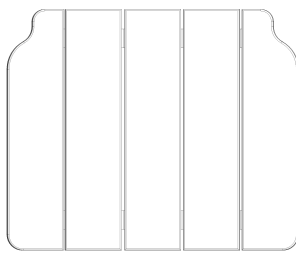
x 1

SEAT BACK ASSEMBLY



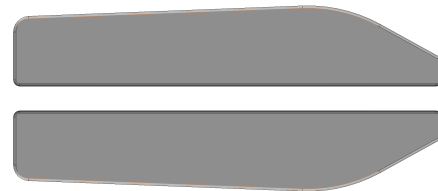
x 1

SEAT ASSEMBLY



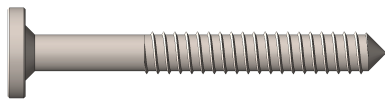
x 1

ARM SET



x 1

50mm Hex Lag



Part Code: 316-1/4-10-50HL

x 4

4mm Allen Wrench



Part Code: 4MMALLEN

x 1

#14 x 3/4 Phillips Pan Head Screw

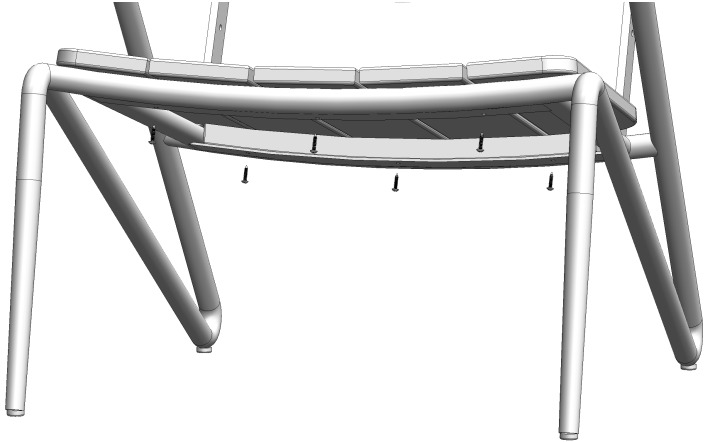


Part Code: 316-14X3/4PPSMS

x 14

WARRANTY QUESTIONS OR COMMENTS PLEASE CALL TOLL FREE AT 1-800-809-3114

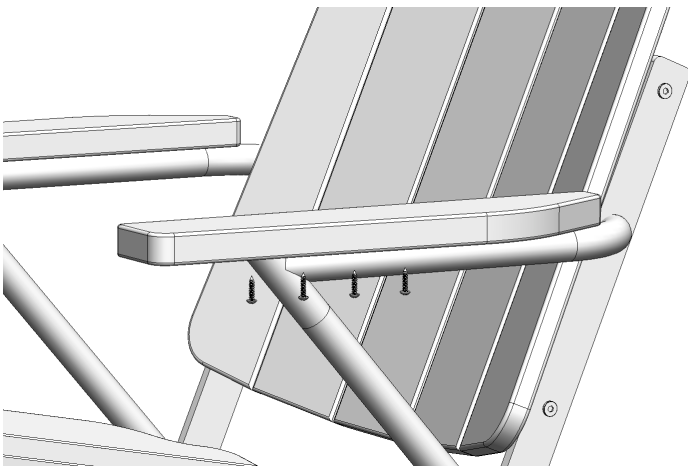
Seaside Casual Furniture | 11 Industrial Drive Coventry, RI 02816 | 800-809-3114 | sales@seasidecasual.com

1**ATTACH SEAT TRAY ASSEMBLY**

On a clean flat surface connect Seat Tray Assembly using (6) 3/4" Phillips Pan Head Screw (AS SHOWN). Do Not Over Tighten.

2**ATTACH SEAT BACK ASSEMBLY**

Connect Seat Back Assembly to Chair Frame on both sides with (4) 50mm Hex Lags (AS SHOWN). Do Not Over Tighten.

3**ATTACH ARMS TO FRAME**

Attach Arms to Chair Frame with (4) 3/4" Phillips Pan Head Screws Per Side (AS SHOWN). Do Not Over Tighten.