

# Greenwich Dining Chairs

601W Chair



SEASIDE CASUAL



## ASSEMBLY INSTRUCTIONS

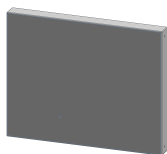
1

**PLEASE READ INSTRUCTIONS COMPLETELY BEFORE BEGINNING.**

Carefully remove contents from box. Make sure that all parts and hardware are included using the Parts List below.

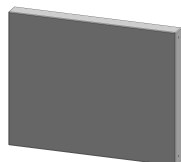
**Tools Required:** #2 Phillips Head Screwdriver;  
(Recommended: Rubber Mallet; High Powered Drill)

Back Assembly



x 1

Seat Assembly



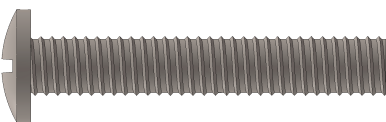
x 1

601 Chair Frame Assembly



x 1

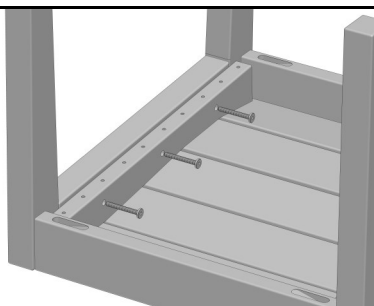
M6 x 40mm PPMS



x 4

1

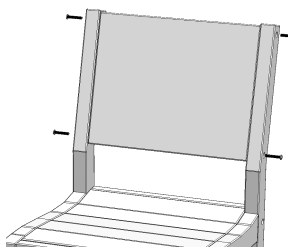
**ATTACH SEAT ASSEMBLY TO SIDES**



Secure Seat Assembly to Side Assembly using (6) 50mm LAGS.

2

**ATTACH SEAT ASSEMBLY TO SIDES**



Secure Back Assembly to Side Assembly using (4) m6 x 40mm PPMS

**WARRANTY QUESTIONS OR COMMENTS PLEASE CALL TOLL FREE AT 1-800-809-3114**

Seaside Casual Furniture | 11 Industrial Drive Coventry, RI 02816 | 800-809-3114 | sales@seasidecasual.com