



SEASIDE CASUAL

(046) Portsmouth Dining Table rev. C

(56In x 56In),

Parts List:

- (1) Table Top Assembly
- (2) Leg Assemblies
- (2) Leg Stretchers
- (2) Long Aprons
- (2) Short Aprons



Hardware:

- 46 (16) 3" Hex 1/4" Lags
- (16) 3/4" Pan Head Screws

Tools Required:

- Phillip's Head Screwdriver
- 4MM Allen Wrench (Included)

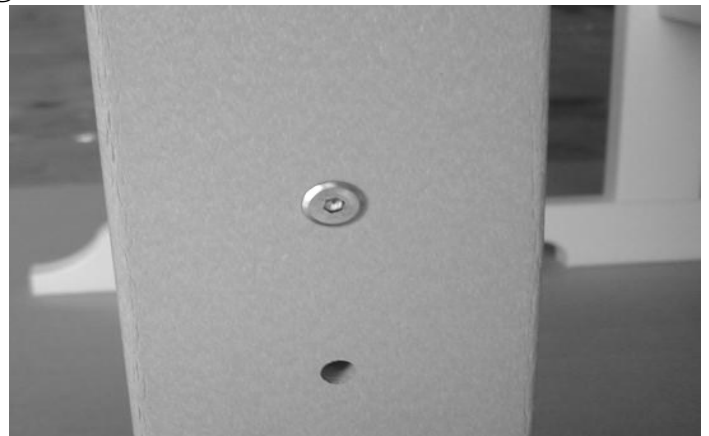
Assembly Instructions

Step One: Set Up

READ ENTIRE INSTRUCTIONS BEFORE BEGINNING! Carefully remove contents from box. Make sure that all parts and hardware are included. Place Table Top upside down on a flat clean surface.

Step Two: Leg Stretchers

Place Leg Stretchers between both Leg Assemblies aligning pre-drilled holes. Attach each end of both stretchers using (2) 3" Hex 1/4" Lags (Right Picture).



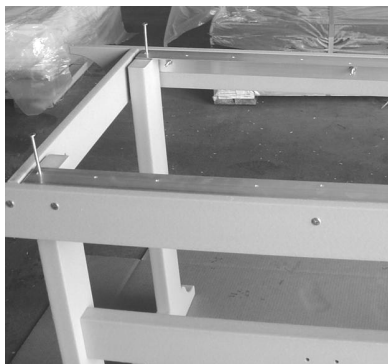
Step Three: Apron Assembly

Place Short Aprons between Long Aprons aligning pre-drilled holes. Attach using a 3" Hex 1/4" Lag on both sides of each Short Apron.



Step Four: Apron Attachment

Place Apron Assembly on to Leg Assembly aligning pre-drilled holes in the Aluminum and Legs (Left Picture). Attach using (4) 3" Hex 1/4" Lags (Right Picture).



Step Five: Base Attachment

Place Base Assembly upside down and square on to the Table Top Assembly. Align Apron ends and sides with the center of the Table Top Assembly. Attach using (16) 3/4" Pan Head Screws.

