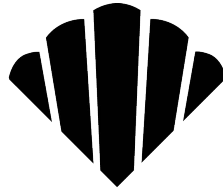


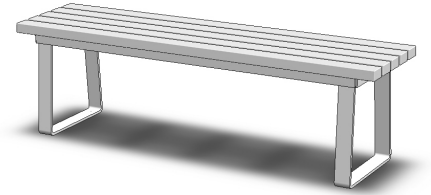
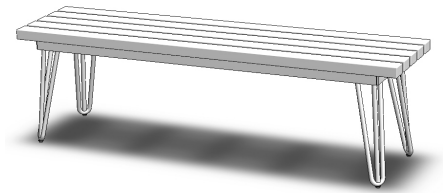
HIP BENCH

411

412



SEASIDE CASUAL



ASSEMBLY INSTRUCTIONS

1

PLEASE READ INSTRUCTIONS COMPLETELY BEFORE BEGINNING.

Carefully remove contents from box. Make sure that all parts and hardware are included using the Parts List below.

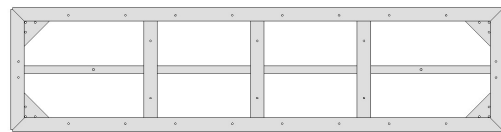
Tools Required: 4mm Allen Wrench (included); #2 Phillips Head Screwdriver;
(Recommended: Rubber Mallet; Power Drill)

TOP



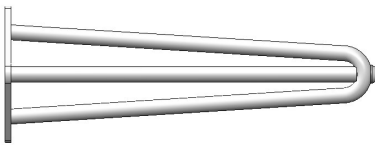
x 1

FRAME



x 1

HAIRPIN LEG (411)



x 4

ANCHOR LEG (412)



x 2

M6 SCREW

Actual Size



x 12

5mm ALLEN WRENCH

Actual Size



x 1

M6 SPLIT WASHER

Actual Size



x 12

M6 WASHER

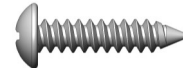
Actual Size



x 12

3/4" PHILLIPS PAN HEAD SCREW

Actual Size



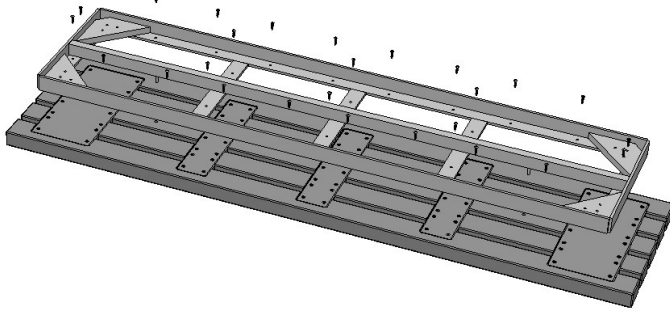
x 26

WARRANTY QUESTIONS OR COMMENTS PLEASE CALL TOLL FREE AT 1-800-809-3114

Seaside Casual Furniture | 11 Industrial Drive Coventry, RI 02816 | 800-809-3114 | sales@seasidecasual.com

2

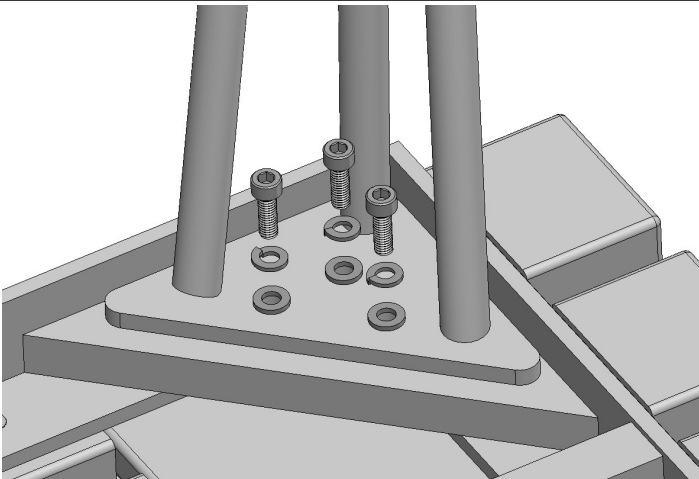
ATTACH TOP TO FRAME



On a clean flat surface align Frame pins with holes underneath Top. Attach Frame to Top with (26) 3/4" Phillips pan head screws. Do not over tighten.

3

ATTACH LEGS



On a clean flat surface connect legs to frame using (3) M6 screws, Split Washers, and washers (AS SHOWN). Finger tighten. Repeat with remaining (9) M6 Screws, Split Washers, and Washers. Do not over tighten.