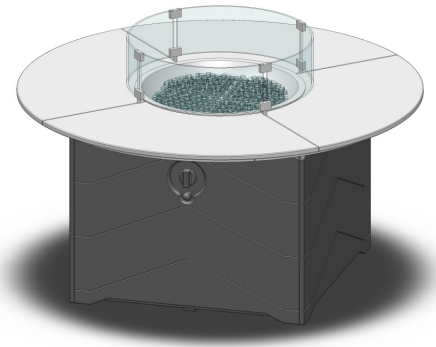


AURA Fire Table

901

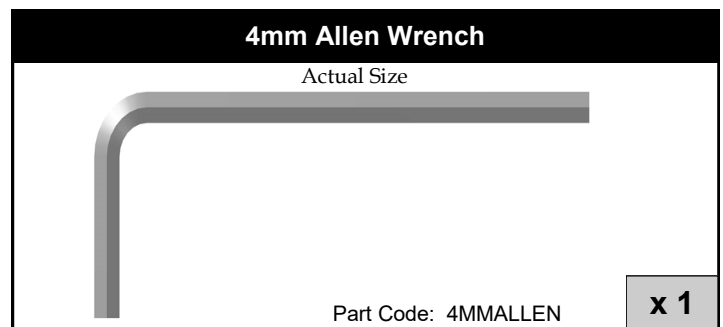
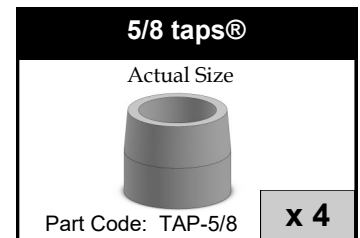
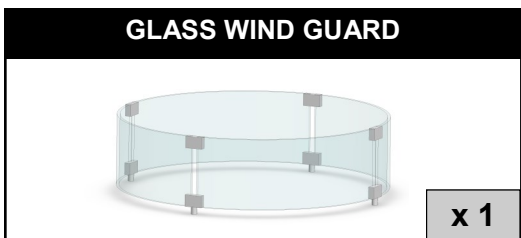
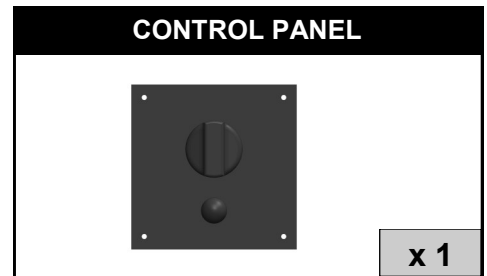
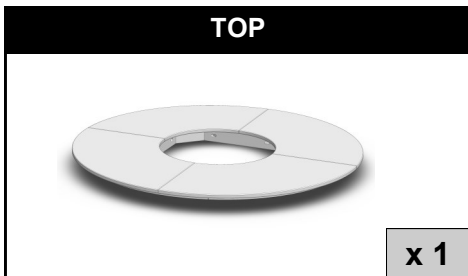


ASSEMBLY INSTRUCTIONS

1

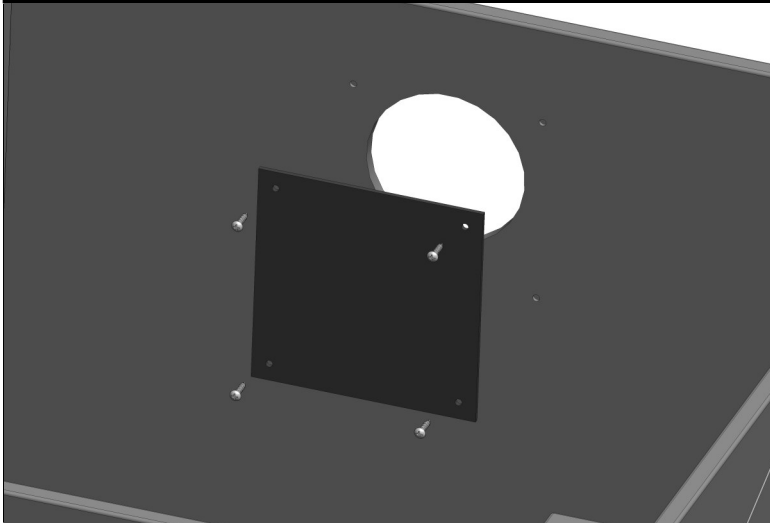
PLEASE READ INSTRUCTIONS COMPLETELY BEFORE BEGINNING.
Carefully remove contents from box. Make sure that all parts and hardware are included using the Parts List below.

Tools Required: 4mm Allen Wrench (included); #2 Phillips Head Screwdriver;
(Recommended: Rubber Mallet; Power Drill)



2

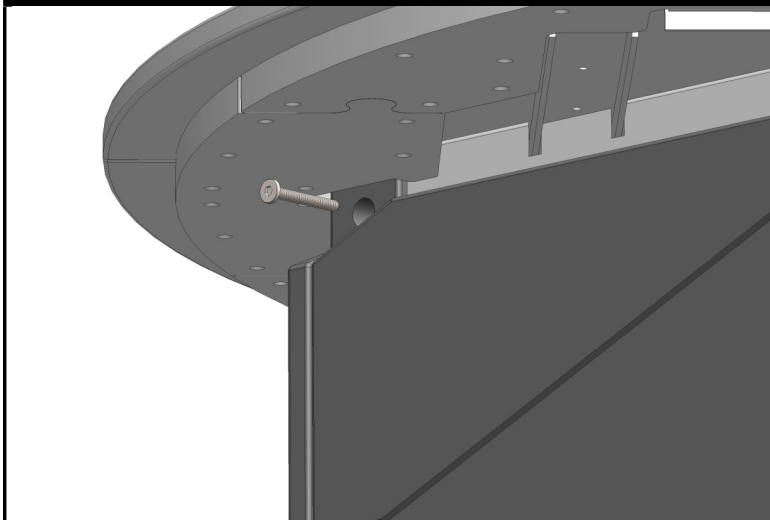
ATTACH CONTROL PANEL



Attach Control Panel to inside of Fire Table Panel. Use (4) 1/2" Pan Head Screws.

3

ATTACH TOP TO BASE



Drop Top onto Base and Secure using (4) 50mm Lags. Plug holes with 5/8" taps®.

4

MAKE CONNECTIONS AND COMPLETE ASSEMBLY



Make all necessary propane tank connections with supplied Fire Components. Fill supplied Gems into Fire Bowl. Finally, Install glass wind guard. Wind guard must be used at all times.

IMPORTANT

Other media options apart from the supplied clear glass gems can be used in Crystal Fire® Plus burners, but they should be supplied by the Outdoor GreatRoom Company™. This ensures that the proper amount of media is used and that the media is approved for use in gas appliances.

MEDIA MUST BE IN PLACE DURING OPERATION. Operation of appliance without media will damage the burner.

Overfilling of the burner with media can cause adverse operational issues.

Use of burner media other than that supplied by The Outdoor GreatRoom Company™ is not recommended and could lead to operational issues.